



23-25

**DUPAGE COUNTY
HISTORICAL MUSEUM**
ENDURING VALUES GALLERY

PUBLIC FORUM PRESENTATION
MARCH 3, 2024 - MARCH 4, 2024

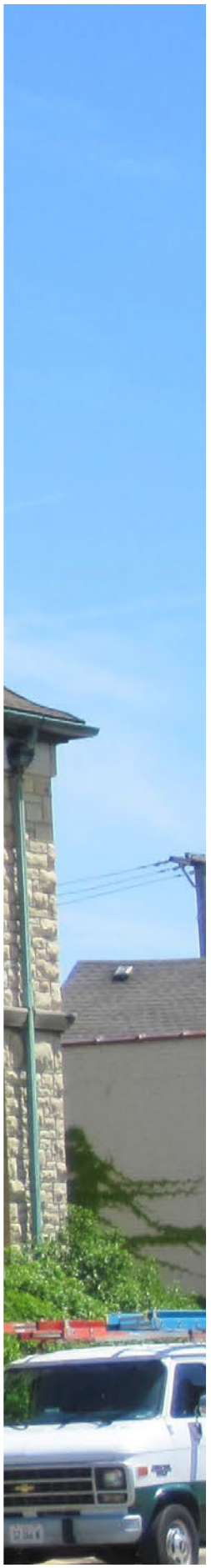




TABLE OF CONTENTS

What Does This Book Represent?	3
Central Theme	4
Exhibit Floor Plan	5
Enduring Values Gallery	6
Stained Glass-Inspired Wall	10
Example Vignette - Infrastructure and Transportation	12
Example Vignette - People Arriving, People Passing Through	14
Inspiration Images	16
Graphic Palette	18
Graphic Approach	19



WHAT DOES THIS BOOK REPRESENT?

This schematic design document presents the ideas from a workshop between the museum team and the Taylor Studios team. It establishes a draft overarching message of the future exhibit and initial ideas for how to communicate this message through exhibit layout, design elements, and graphics. This stage is the perfect time to register your preferences, before the design progresses and solidifies.

As you review, consider the following.

- What is your overall impression of the exhibit design?
- Does the exhibit layout feel easy to navigate?
- How well does the exhibit balance educational content with engaging interactive elements?
- How accessible do you feel the exhibit is to people of all ages and abilities?
- What specific aspect of the exhibit design do you like most?
- What changes or improvements would you suggest for the exhibit design?
- Are there any specific historical events or figures you feel should be better represented in the exhibit?

Next Steps

During the next stage of design, Taylor Studios, Inc will work with the museum to review input and make the proper adjustments before taking the design to the next level of content, exhibit, and graphic detail.

CENTRAL THEME

Central Theme Statement

History is ordinary people.

The Central Theme

Interpretive exhibit design begins with a central theme, an overarching statement that ties all exhibit content and elements together. From the central theme flows supporting content called subthemes and storylines.

At the workshop on August 14th, the team discussed various ideas for the central theme. These ideas were evaluated, refined, and combined, resulting in the following central theme statement:

HISTORY IS ORDINARY PEOPLE.

Subthemes

The following subthemes break the central theme into digestible chunks to aid visitor engagement while reinforcing the central theme.

Subtheme I: (Central Map) Hard-working, everyday citizens are instrumental in addressing the continual growth of DuPage County.

Subtheme II: (Natural Resources) The DuPage River Basin’s natural spaces contained timber, prairie, and rich soil: life-sustaining materials for settlers at an earlier time. Many of these natural regions endure today as wild spaces that citizens value deeply.

Subtheme III: (Infrastructure & Transportation) DuPage County has addressed change throughout its history; infrastructure and transportation are two of its more significant adaptations.

Subtheme IV: (People Arriving/People Passing Through) The story of DuPage County parallels other United States counties that have been mostly or even entirely shaped by immigrants.

Subtheme V: (Government & Midnight Raid) Understanding DuPage history helps residents recognize the role of their government.

Subtheme VI: (Business & Leadership) DuPage possesses an entrepreneurial spirit that excels in the county’s favorable business environment.

Subtheme VII: (Military) The pride citizens take in DuPage County is evident in their involvement in numerous conflicts.

Subtheme VIII: (Education) DuPage County always emphasized education for future generations as evidenced by the number of colleges/universities and national caliber public schooling.

Subtheme IX: (Science & Innovation) One vital aspect to the successful growth of DuPage County lies in its ability to grow the research and development sector of the economy.

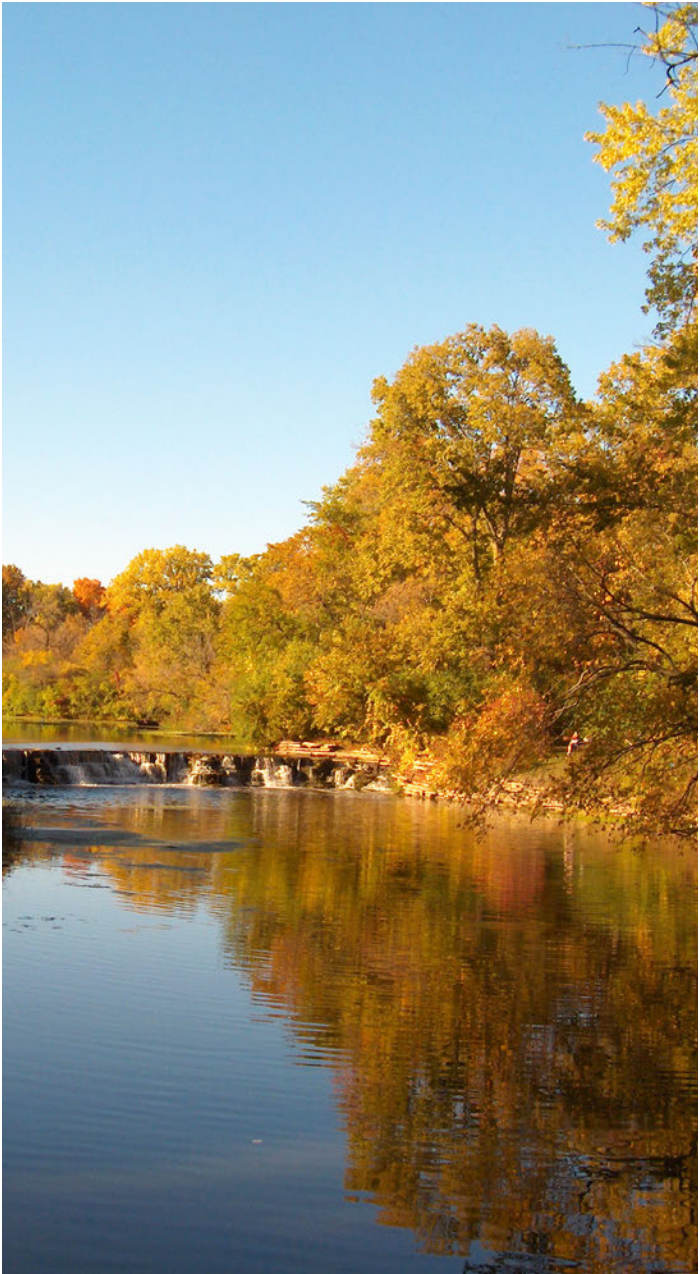
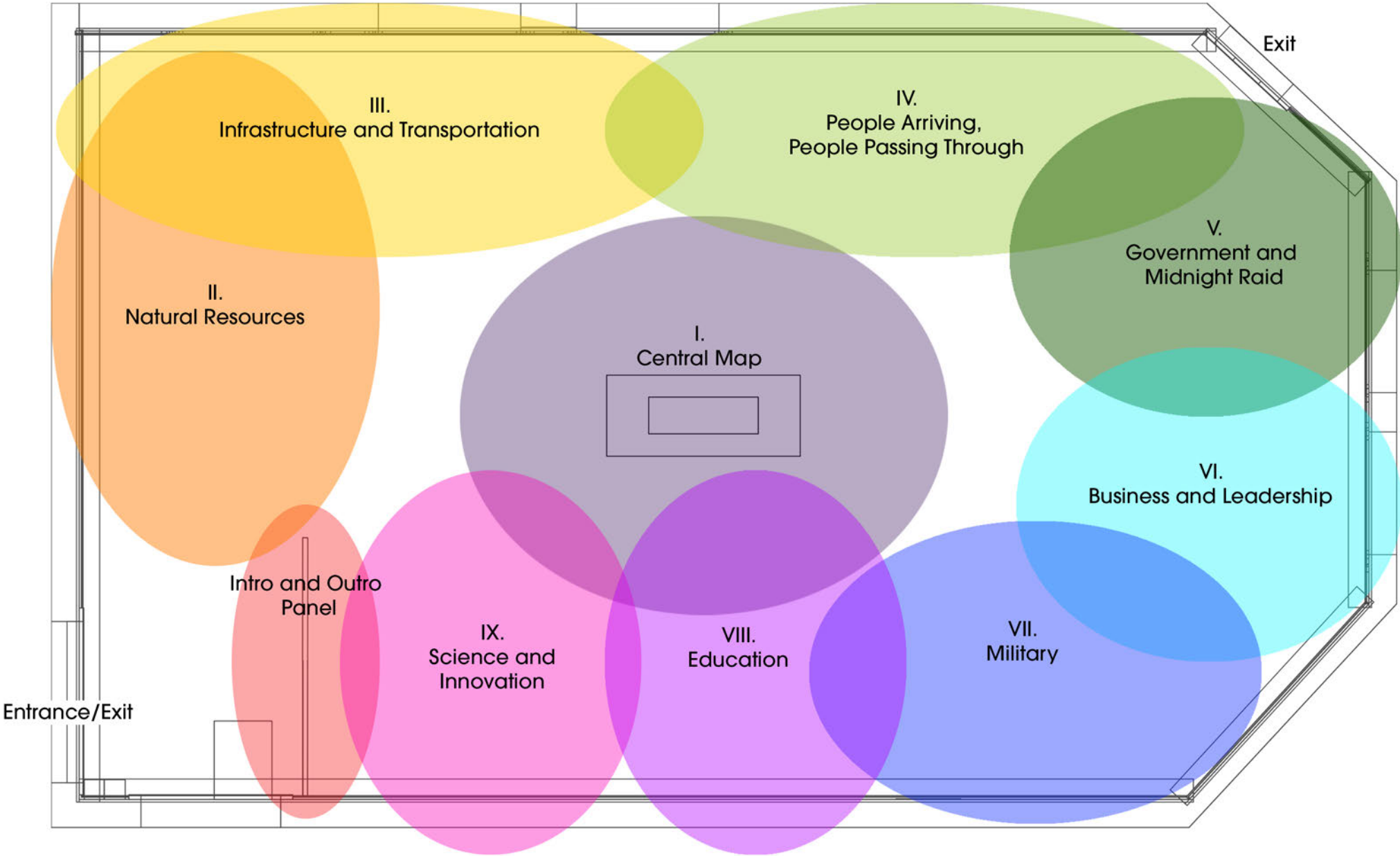


EXHIBIT FLOOR PLAN



Description:

Exhibit Flow

When visitors stop at the lobby desk, they inevitably glance into the exhibit gallery. The gallery reveals its first unanticipated visual feast: a colorful stained glass-inspired wall. Inspired by the windows of the building itself, this content-based work of art generates visitor anticipation to get into the gallery and explore. It also serves to insulate the space, creating an immersive, contained experience.

Once they enter, visitors pause at the stained glass-inspired wall and find a flanking graphic that shares the gallery’s central theme:

History is Ordinary People.

The central map is the central interpretive opportunity in this “hub and spoke” gallery layout. It can be the first thing visitors interact with or serve as an element to return to, using it as a touch point between vignettes.

This layout allows visitors to experience the interpretive vignettes along the periphery in the order they see fit. Additionally, the map is programmed to highlight which vignette a visitor may want to explore depending on their map input.

Each vignette is self-standing, therefore visitors can comprehend each area alone or as part of the larger exhibit meaning.

ENDURING VALUES GALLERY



OVERALL VIEW - DETAIL



Exhibit Narrative:

Moments in Time

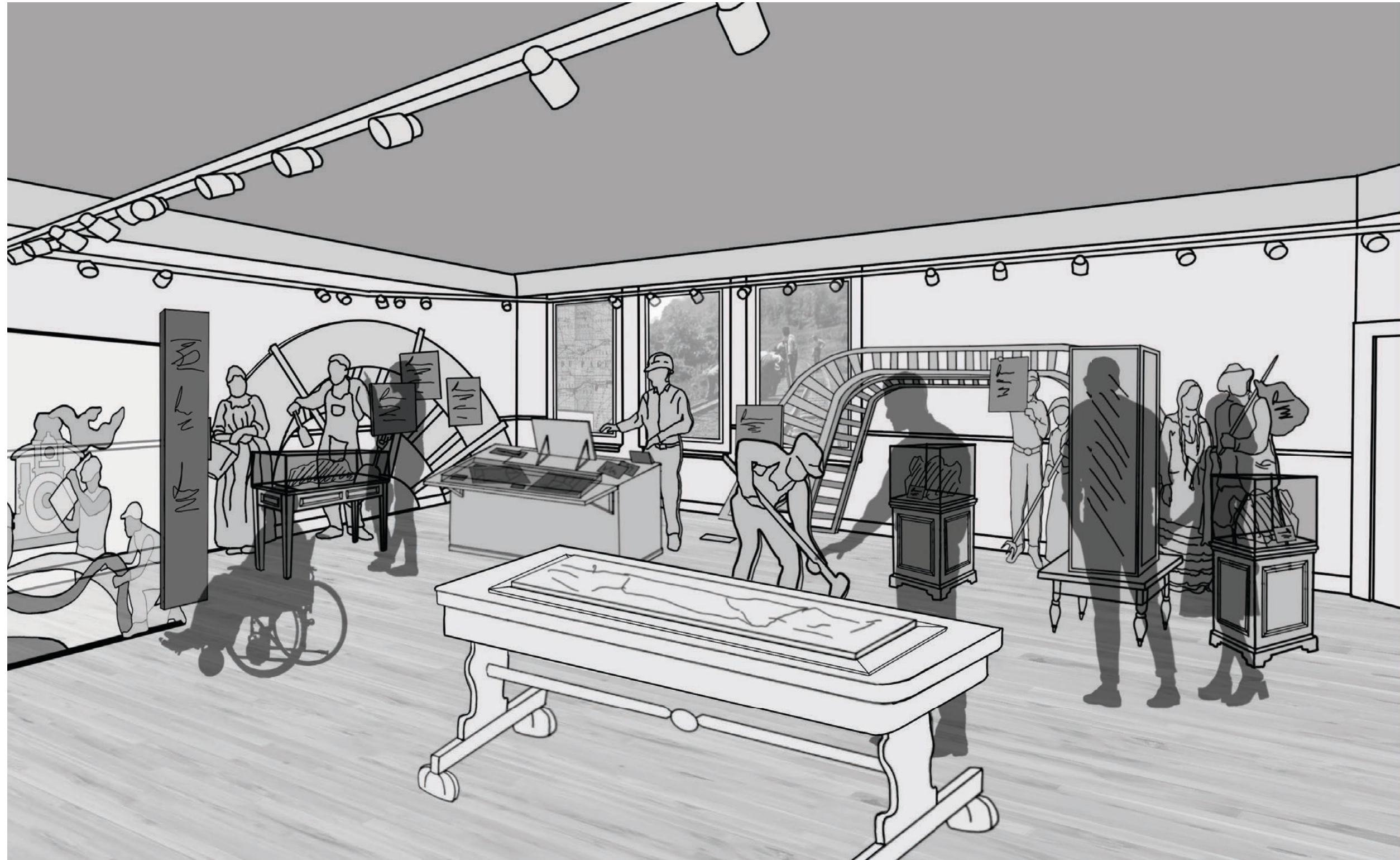
Visitors explore exhibit gallery vignettes to discover moments in time when ordinary people worked to advance DuPage County's quality of life. Each vignette incorporates 2D, illustrated silhouettes, some of whom are historical figures, some of whom are anonymous. Silhouettes heighten engagement by including the human element into the storytelling. Each silhouette has an accompanying introduction panel interpreting their era and professions.

Artifact cases are placed throughout, creating a sense of discovery. Some are freestanding cases while others are integrated into the late-Victorian exhibit furniture.

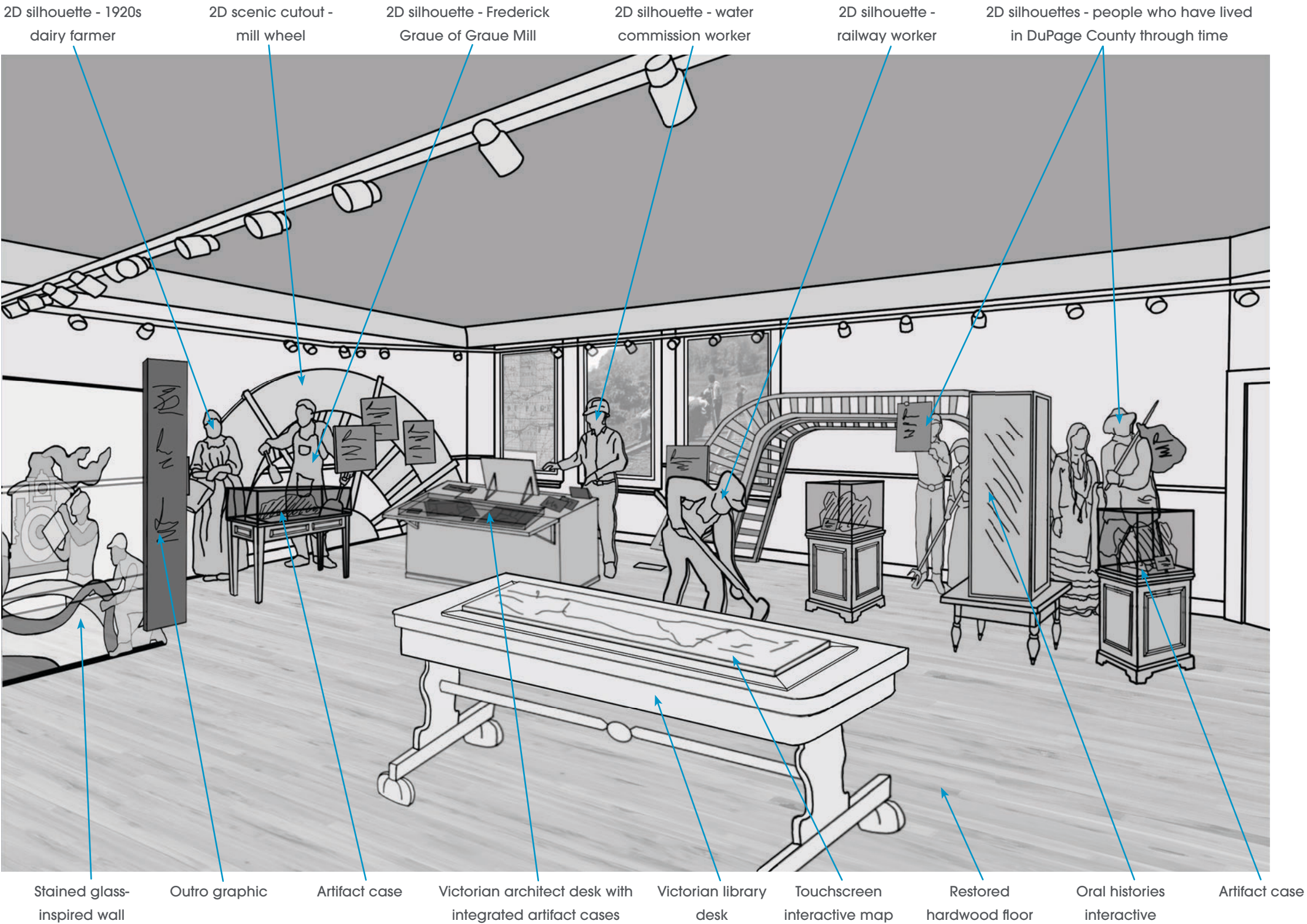
Gallery as Artifact

Visitors readily notice the gallery's restored original flooring. Coordinated wall colors bring out the tones and subtleties of the restored floor while emphasizing the gallery's graphic panels. Using late Victorian furniture is key to restoring the space and honoring the building as an artifact. In 1891, it is very likely this building would have had similar furnishings (other than certain pieces that nod to a more modern period). The furniture adds a touchable, relatable element to the exhibit and creates an opportunity to physically interact with history.

ENDURING VALUES GALLERY



OVERALL VIEW - DETAIL



STAINED GLASS-INSPIRED WALL

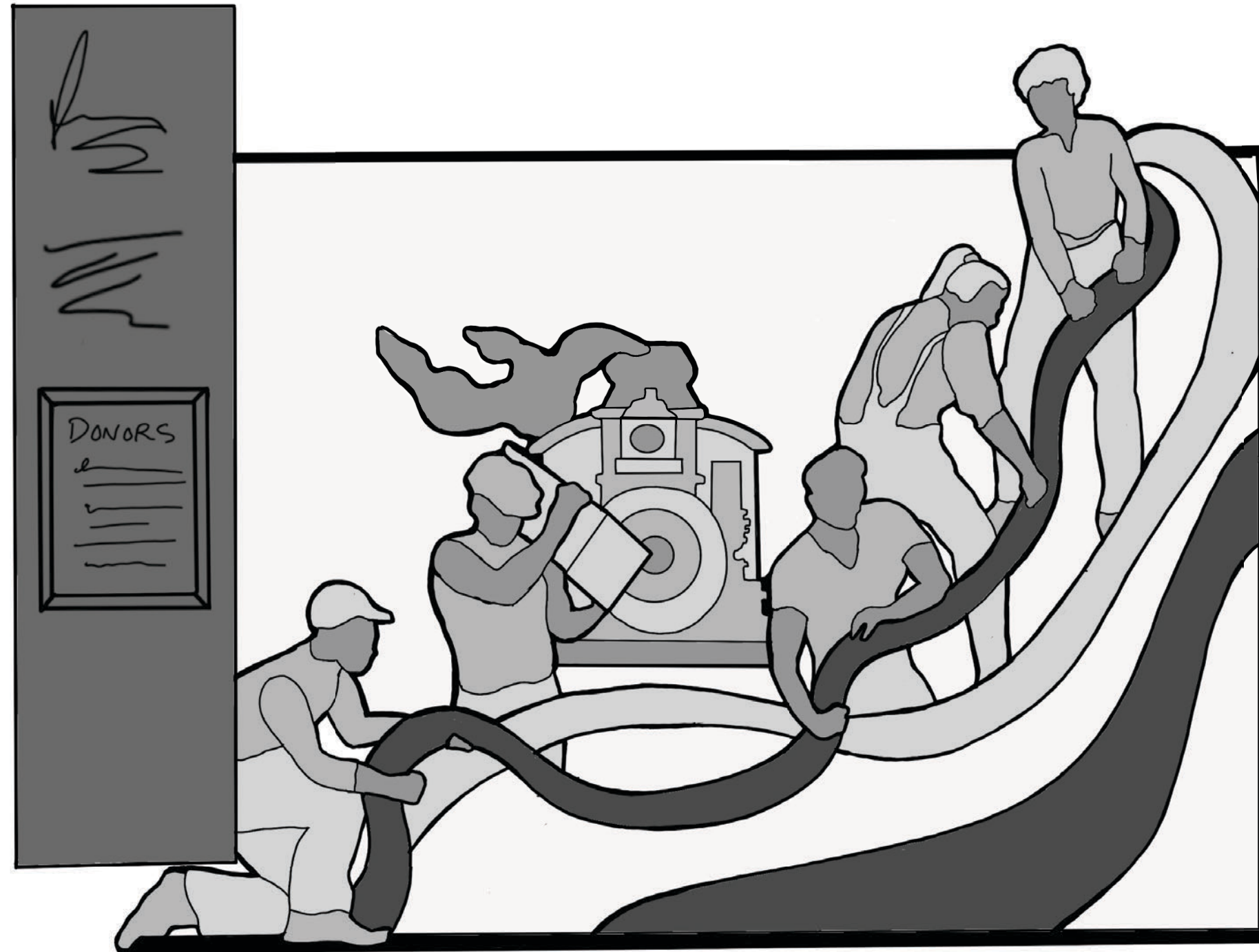


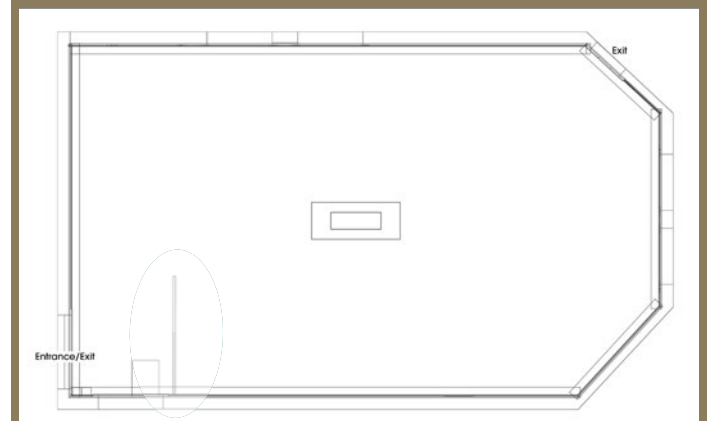
Exhibit Narrative:

The stained glass-inspired wall evokes Works Progress Administration (WPA) artwork, which often highlights hard work and collaborative spirit. This large visual sets the tone for the gallery, focusing on ordinary citizens working to establish and maintain DuPage county.

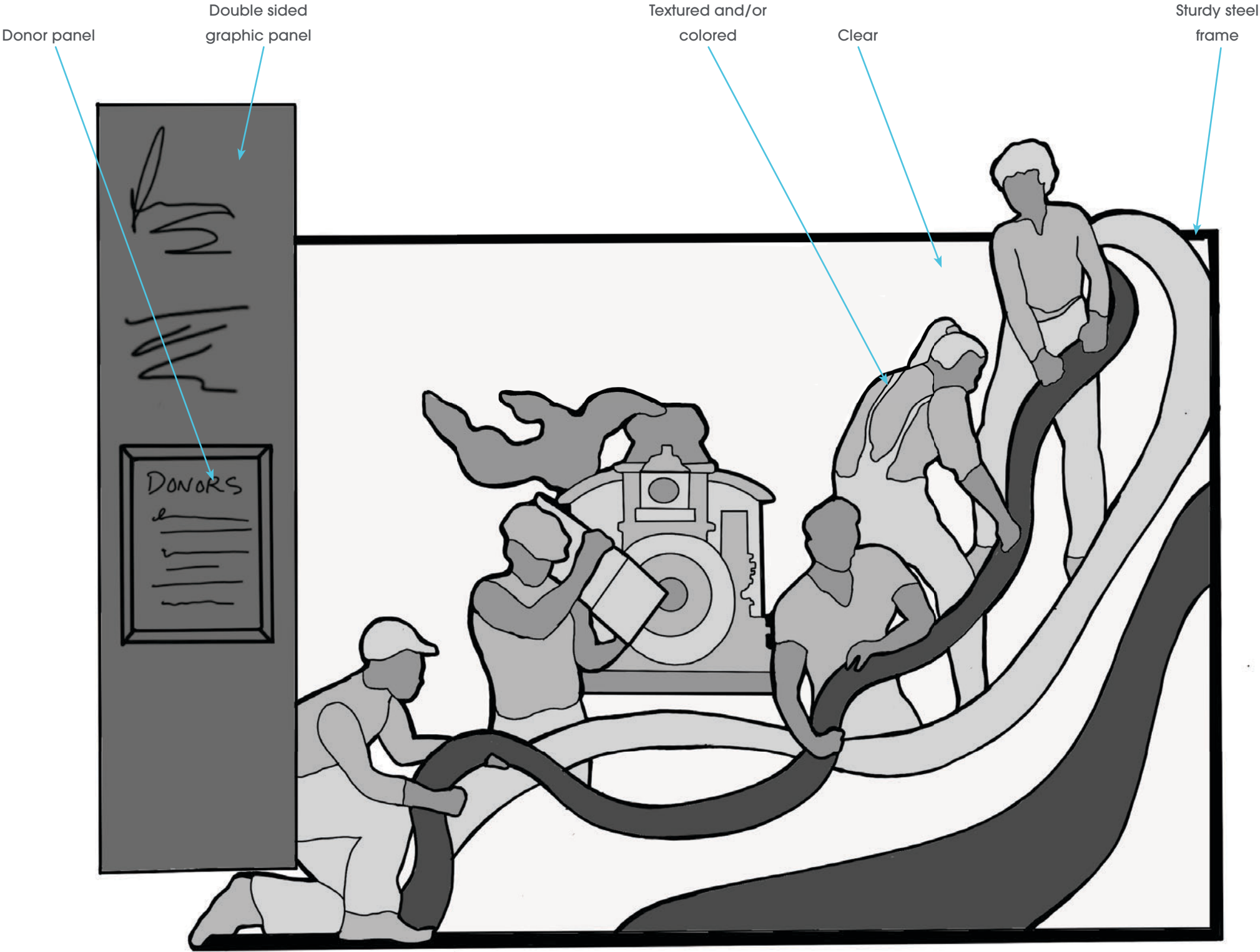
The panel “insulates” the space to create an immersive atmosphere, while semi-concealing the visitor-engaging central map, which presents a big reveal that features engaging and interpretive exhibit elements. As with restoring the floors and using period furnishings, this wall honors the building as an artifact. It is inspired by the stained glass windows on the third floor and combines the feeling of the building with the spirit of this art style.

Note: All elements other than graphic and donor panel are translucent or transparent.

KEY PLAN



STAINED GLASS-INSPIRED WALL - DETAIL



EXAMPLE VIGNETTE - INFRASTRUCTURE AND TRANSPORTATION

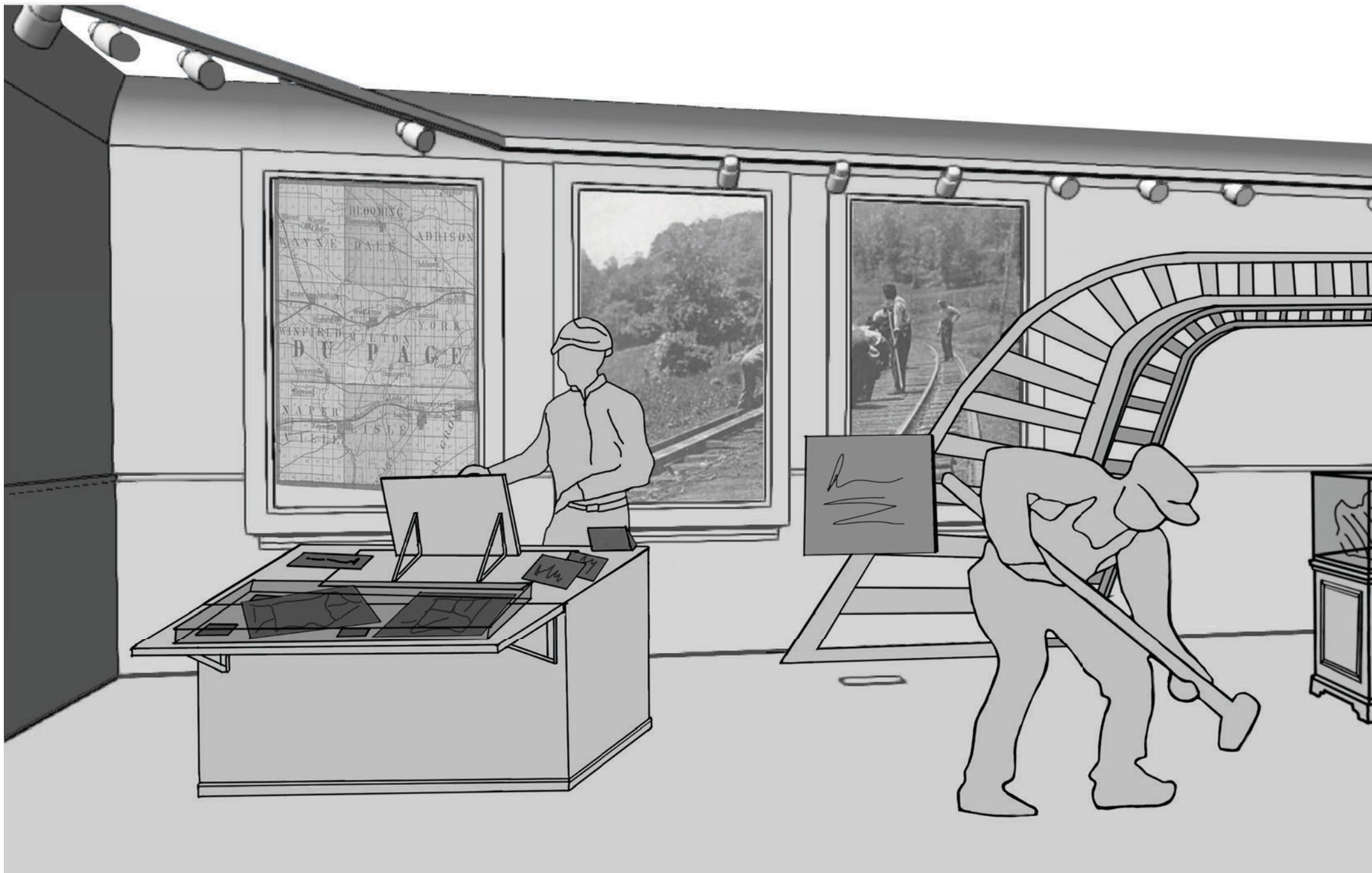


Exhibit Narrative:

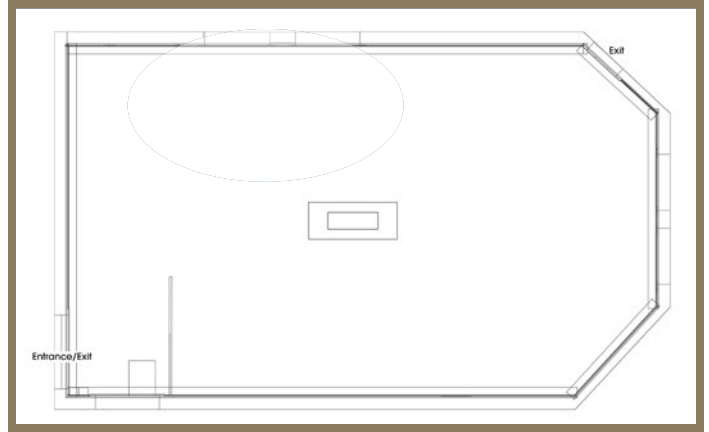
One concept that was repeated in numerous historical sources was DuPage County's ability to effectively adapt to consistent change.

One of these initial challenges was building infrastructure, railroads, and highways. The 2D railway worker symbolizes historical change and adaptation, while a 2D modern-day water commissioner symbolizes adaptation to contemporary challenges.

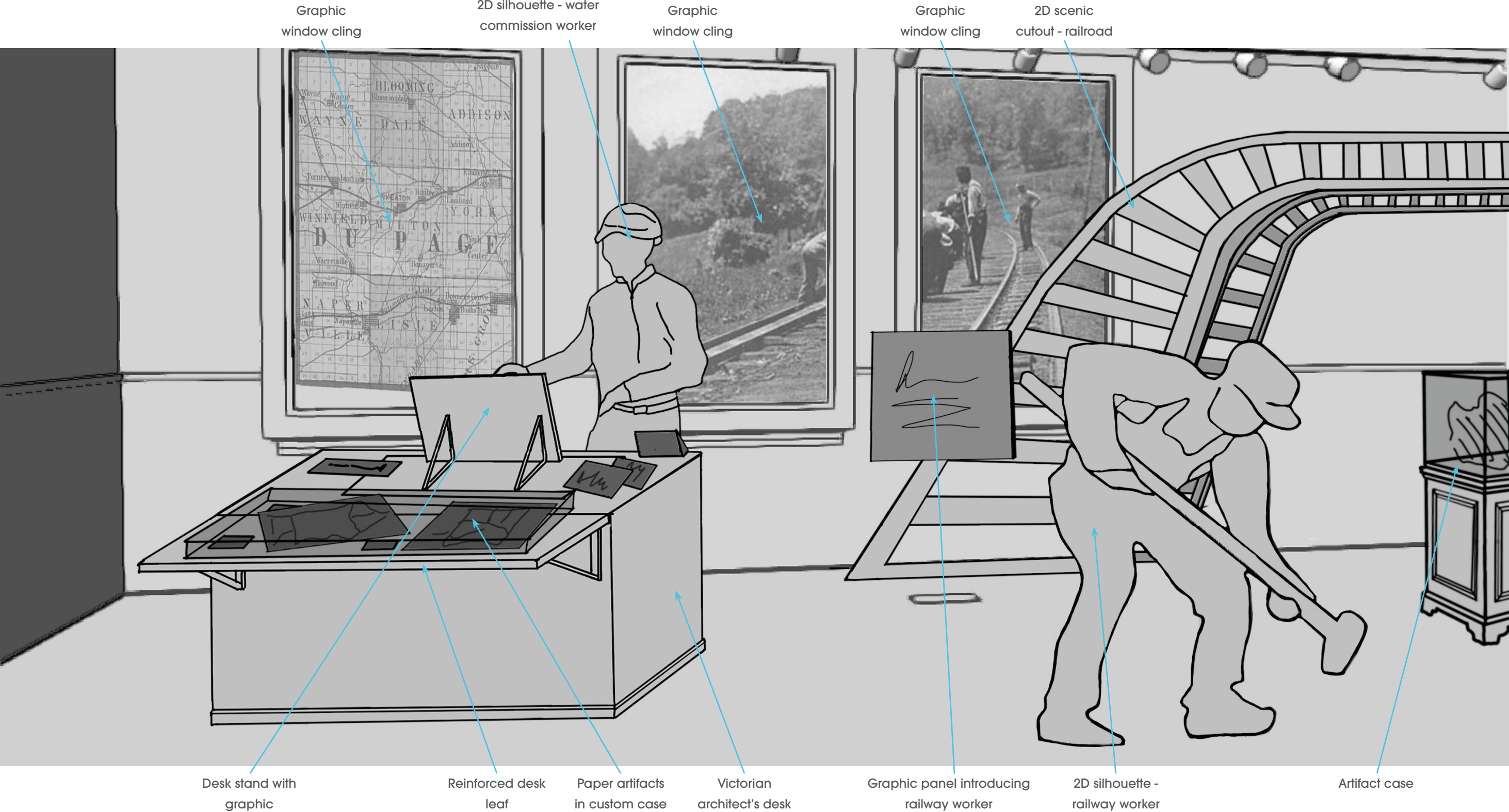
Scenic elements such as the railroad track serve as backdrops and offer an artistic, fun element that frames the vignette. Similar scenic elements are sprinkled throughout the gallery, connecting vignettes to one another with relevant visual tie-ins between stories.

Window clings block light and add context to the story in this vignette, incorporating a map and historical images of everyday people building infrastructure.

KEY PLAN



EXAMPLE VIGNETTE - INFRASTRUCTURE AND TRANSPORTATION - DETAIL



EXAMPLE VIGNETTE - PEOPLE ARRIVING, PEOPLE PASSING THROUGH

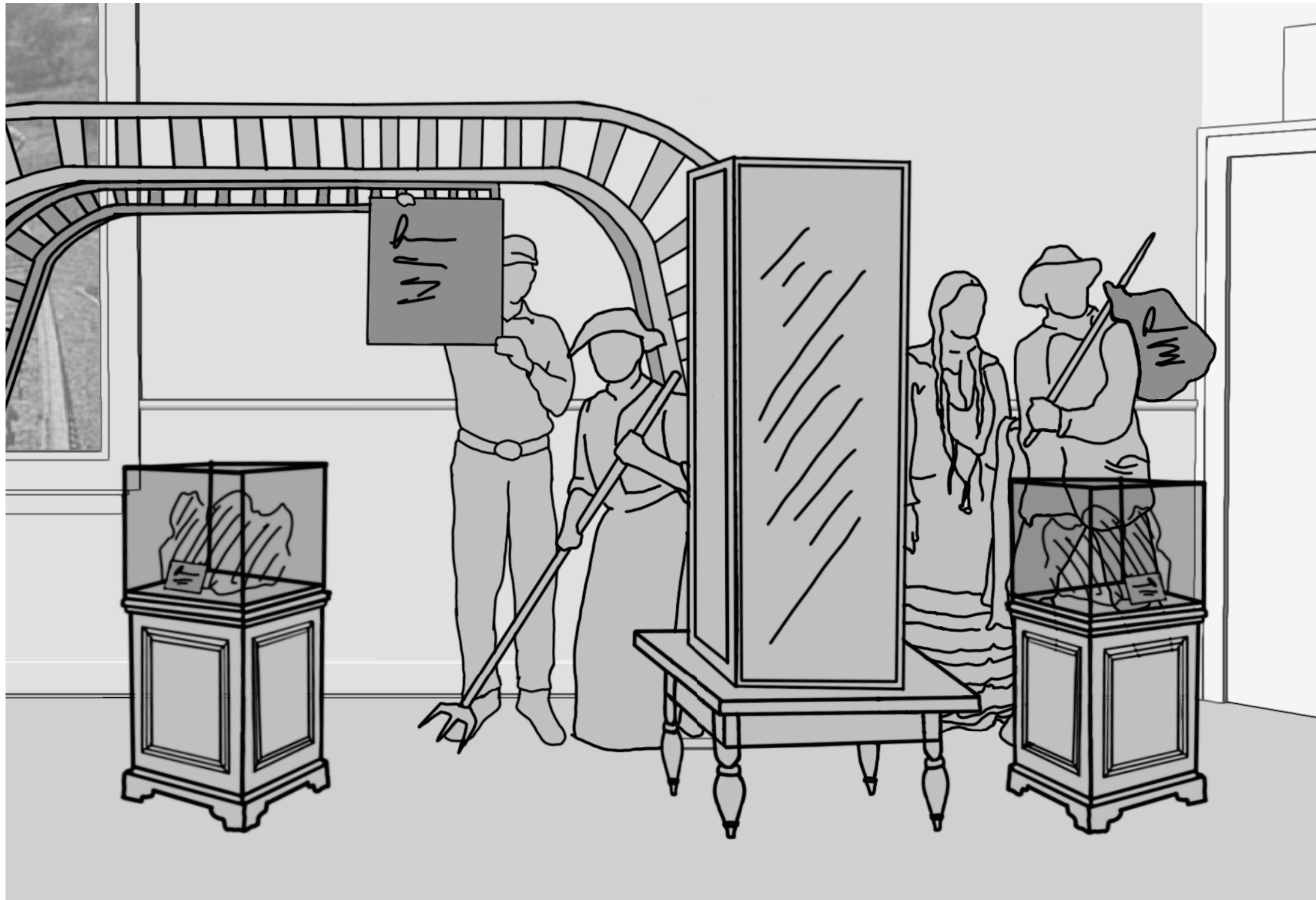


Exhibit Narrative:

DuPage has an interesting pre-history as well as written history of numerous peoples traveling to and through DuPage County.

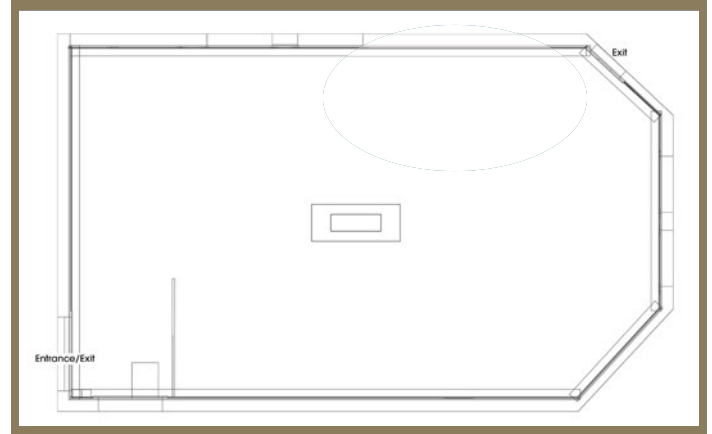
2D silhouettes represent some of the peoples that have traveled through or resided in the area. Each character is identified and interpreted through an attached label.

Centered in this vignette is an oral history interactive. The interactive is composed of a large screen integrated into historical casework that complements the period furniture found elsewhere in the gallery.

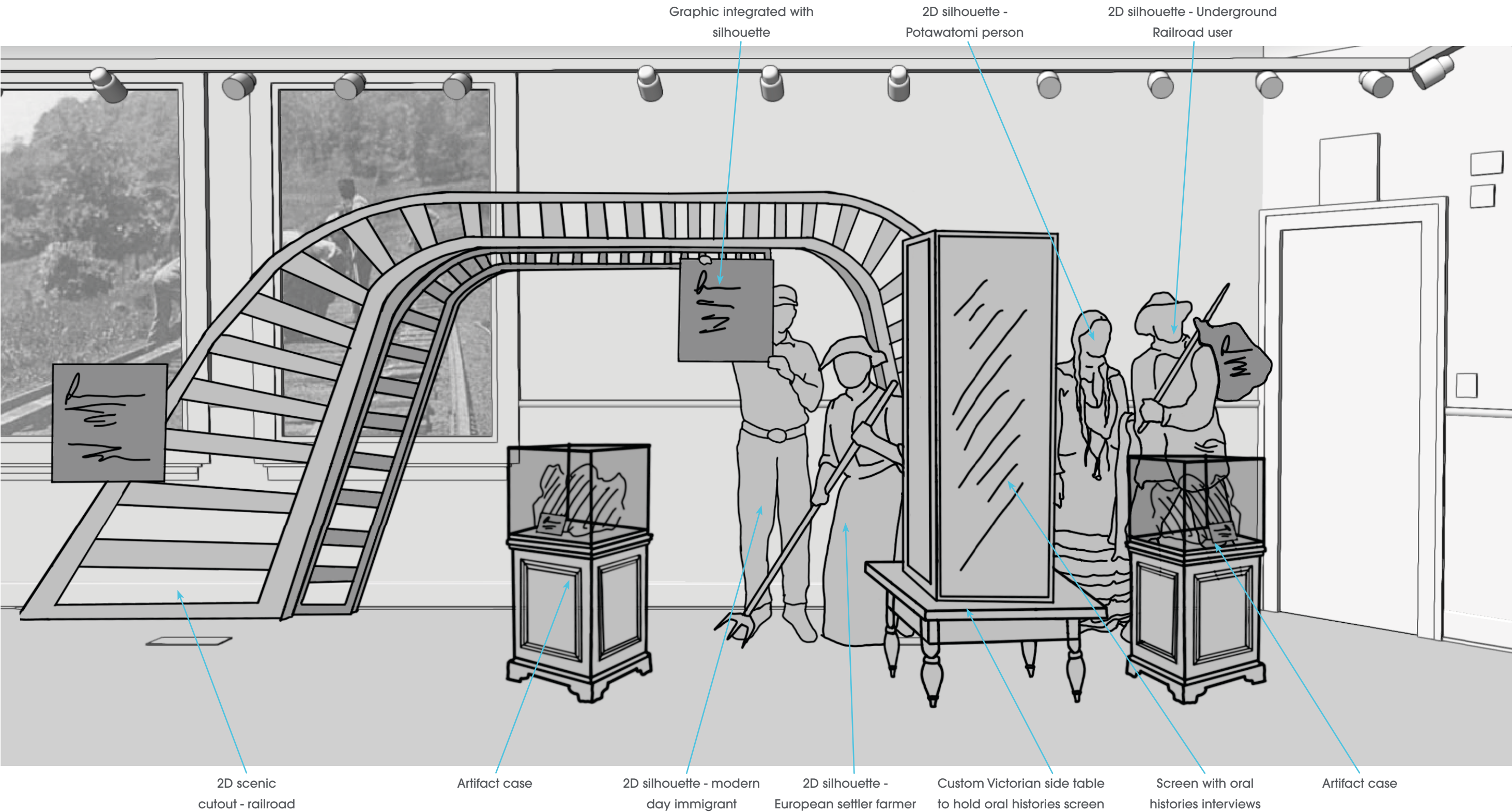
These audiovisual presentations represent a wide range of diverse peoples for visitors to choose: Glennette Turner, authority on the Underground Railroad; Dr. Abdel Raouf Elganzouri's son (recent immigrant); a contemporary Potawatomi person; and a contemporary religious speaker.

Seeing and hearing real people enhances the connection and meaning between exhibit and visitor.

KEY PLAN



EXAMPLE VIGNETTE - PEOPLE ARRIVING, PEOPLE PASSING THROUGH - DETAIL



INSPIRATION IMAGES



Style Reference for Leaded Glass

The style of the stained glass-inspired wall comes from the by Works Progress Administration murals.



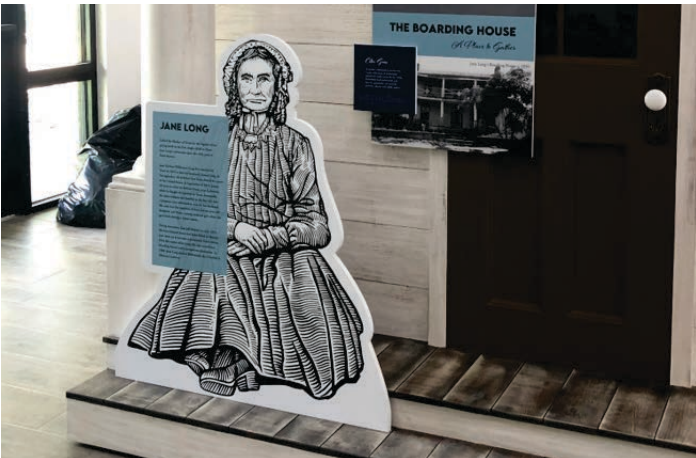
Stained Glass Person

People rendered in stained glass may have approximately this level of detail.



Pedestal Case

Pedestal cases like this are found throughout the exhibit.



2D Silhouette Style

2D silhouettes will be illustrated in a style similar to this.



Oral Histories Screens

Life-size LED screens display interview subjects.

INSPIRATION IMAGES



Case for Oral Histories Interactive

A custom case styled after this one will be built to house the oral histories interview screen.



Card Catalog

Card catalog (PBC) could be displayed in the education content area.



Table for Central Map Interactive

A historical Victorian library table will house the interactive map touchscreen.



Central Map Interactive

An interactive touch screen will be embedded in a historical table, as in this example.



Table Case

Table cases like this are found throughout the exhibit.



Architect's Desk

A historical architect's desk will house paper artifacts and be fully touchable.

GRAPHIC PALETTE

Header Information




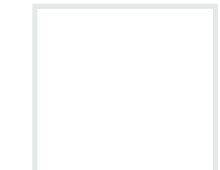


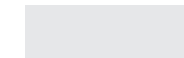
Wayfinder CF Bold

Sub Header Information

New Spirit Semibold

Lorem ipsum dolor sit amet, consectetur adipiscing elit, sed diam nonummy nibh euismod tincidunt ut laoreet dolore magna aliquam erat volutpat. Ut enim ad minim veniam, quis nostrud exerci tation ullamcorper suscipit lobortis nisl ut aliquip ex ea commodo consequat.

New Spirit Regular

Pantone 5415 C	Pantone 122 C	Pantone 427 C	CMYK 0,0,0,0
			
Pantone 5435 C	Pantone 1205 C	CMYK 0,0,0,10	
			

Graphic Narrative:

Colors

- **Main Colors:** Soft blues serve as the dominant background color, evoking a sense of calm and nostalgia, which compliments the original wood architecture. It reflects the past while maintaining a fresh, clean look that is approachable for modern audiences.
- **Accent Colors:** The bold yellow used for introductory panels and interactive prompts provides a contrast against the muted blue, instantly drawing attention to key areas of focus. The addition of a cool gray offers a grounded and serious tone, adding depth to the design and reinforcing the historical theme.

Fonts

- **Main Headers:** The large, bold serif font used for the vignette subtheme statements commands attention. The serif typeface adds a historical tone that ties in well with the exhibit’s theme, reinforcing the weight of the content while remaining readable.
- **Subheaders and Body Text:** The typography for subheaders and body text remains consistent with the overall theme. The text ensures readability and modernity, while also complementing the classic feel of the main header.
- **Hierarchy:** The boldness and size of the main header set the narrative, while the secondary text in colored boxes allows for a smoother flow of information, ensuring that viewers can easily distinguish between key messages and supporting details.

Transportation made us.

Working on the Railroad

Lorem ipsum odor amet, consectetur adipiscing elit. Maximus sodales vehicula sit diam proin netus. Vitae proin eu consectetur aptent auctor phasellus vehicula posuere at. Metus dui velit auctor cursus nulla laoreet lobortis.

Sub Header Information

Lorem ipsum dolor sit amet, consectetur adipiscing elit, sed diam nonummy nibh euismod tincidunt ut laoreet dolore magna aliquam erat volutpat. Ut enim ad minim veniam, quis nostrud exerci tation ullamcorper suscipit lobortis nisl ut aliquip ex ea commodo consequat.

Sub Header Information

Lorem ipsum dolor sit amet, consectetur adipiscing elit, sed diam nonummy nibh euismod tincidunt ut laoreet dolore magna aliquam erat volutpat. Ut enim ad minim veniam, quis nostrud exerci tation ullamcorper suscipit lobortis nisl ut aliquip ex ea commodo consequat.



Artifact Label
This is a placeholder for an artifact label. It contains text that describes the artifact and its significance to the collection.

Artifact Label
This is a placeholder for an artifact label. It contains text that describes the artifact and its significance to the collection.

Graphic Narrative:

Graphic Elements

- **Structured Layout:** The separation of content into distinct text and image blocks creates a clean, organized layout that guides the viewer through the narrative in a logical progression. Each block is self-contained, allowing visitors to absorb one piece of information at a time without overwhelming them.
- **Visual Anchors:** The large typography of the main headers acts as an anchor for each vignette, while the bright yellow text block serves as a secondary focal point. The placement of these two elements ensures that viewers engage first with the overarching theme before diving into detailed historical facts.
- **Immersive Integration:** The graphics will seamlessly blend into historical settings, such as being displayed near artifacts or within reconstructed environments, immersing viewers into the scene. Visitors will be able to engage more deeply as the graphics provide context for the artifacts, linking the written content directly to the physical elements of DuPage County’s history.